

This document was generated on 04/26/2010

PLEASE CHECK WWW.MOLEX.COM FOR LATEST PART INFORMATION

Part Number: **0398801009**
Status: **Active**
Description: 5.08mm (.200") Pitch Beau™ Eurostyle™ High Profile, Three Level Terminal Block, Modular, 9 Circuits

Documents:

[3D Model](#) [RoHS Certificate of Compliance \(PDF\)](#)
[Drawing \(PDF\)](#)

Agency Certification

UL E48521

General

Product Family Terminal Blocks
 Series [39880](#)
 Application Wire-to-Board
 Component Type One Piece
 Product Literature Order No USA-263
 Product Name Eurostyle™ Multi-Level
 Type Euro Block

Physical

Circuits (Loaded) 9
 Entry Angle Horizontal
 Flammability 94V-0
 Lock to Mating Part None
 Number of Rows 3
 Orientation Vertical
 PC Tail Length (in) 0.157 In
 PC Tail Length (mm) 4.00 mm
 PCB Retention None
 PCB Thickness Recommended (in) 0.093 In
 PCB Thickness Recommended (mm) 2.40 mm
 Panel Mount No
 Pitch - Mating Interface (in) 0.200 In
 Pitch - Mating Interface (mm) 5.08 mm
 Pitch - Term. Interface (in) 0.200 In
 Pitch - Term. Interface (mm) 5.08 mm
 Polarized to Mating Part N/A
 Shrouded Fully
 Stackable Yes
 Temperature Range - Operating 110°C
 Wire Size AWG 12, 14, 16, 18, 20, 22, 24, 26, 28, 30
 Wire Size mm² 0.05 - 2.50

Electrical

Current - Maximum per Contact 24A
 Voltage - Maximum 300V

Solder Process Data

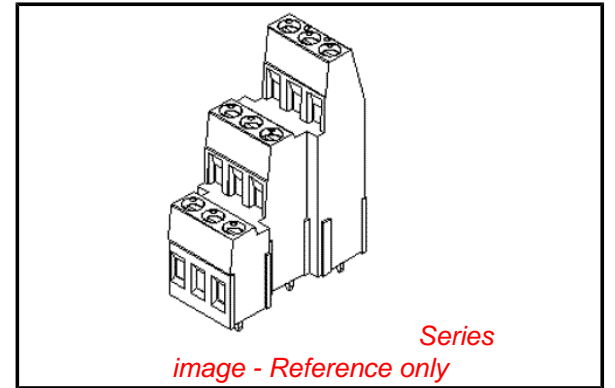
Lead-free Process Capability Wave Capable (TH only)

Material Info

Old Part Number 883409

Reference - Drawing Numbers

Sales Drawing SD-39880-007



EU RoHS

**ELV and RoHS
Compliant**
REACH SVHC
 Not Reviewed
**Halogen-Free
Status**
Not Reviewed

China RoHS



**Need more information on product
environmental compliance?**

Email productcompliance@molex.com
 For a multiple part number RoHS Certificate of Compliance, [click here](#)

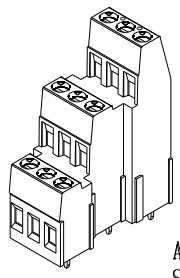
Please visit the [Contact Us](#) section for any non-product compliance questions.

Search Parts in this Series

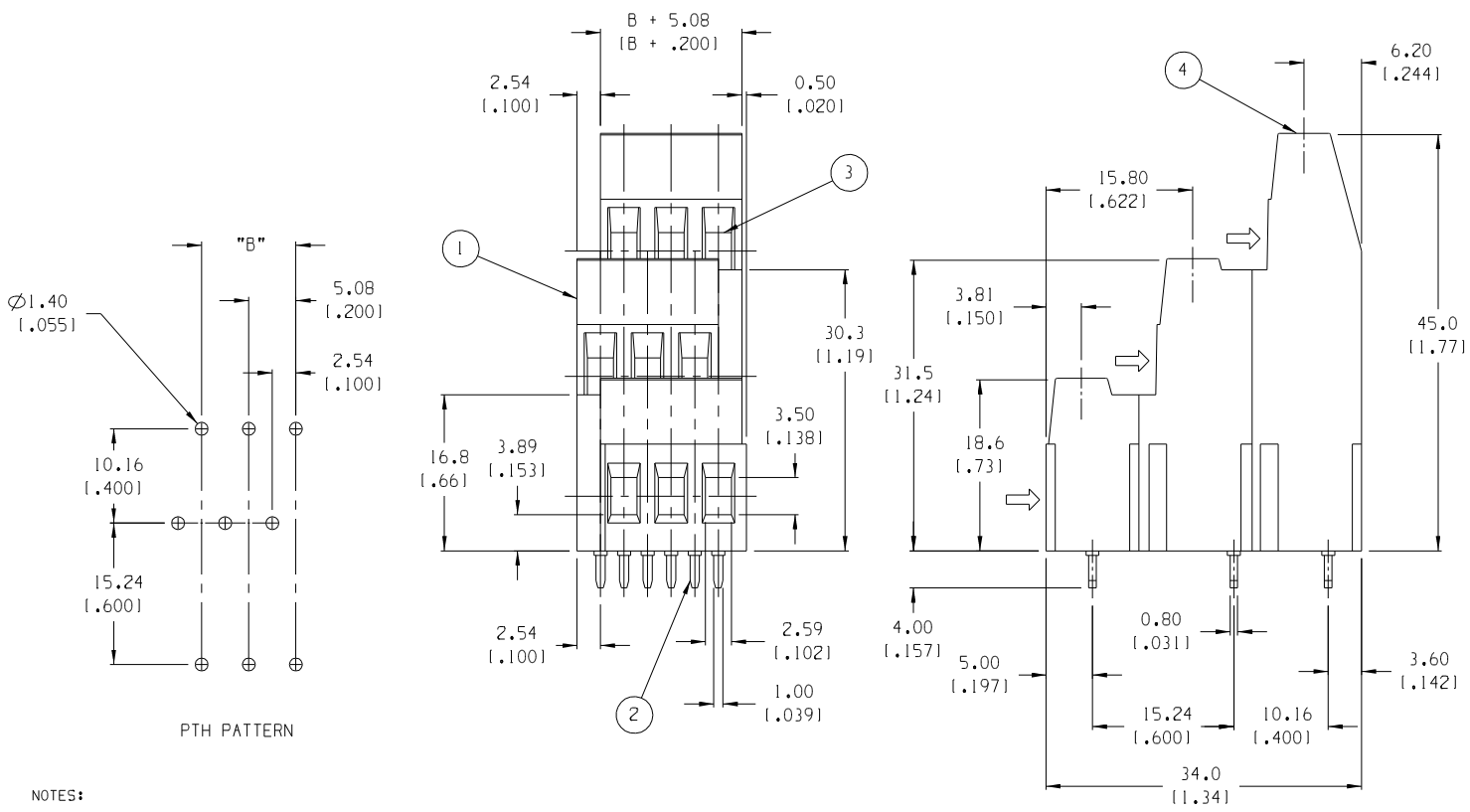
[39880Series](#)

This document was generated on 04/26/2010

PLEASE CHECK WWW.MOLEX.COM FOR LATEST PART INFORMATION



AUX. VIEW
SCALE 1:1
9 CIRCUIT SHOWN



NO. OF CIRCUITS "XX"	DIM. "B"	MATERIAL NO.
06	5.08 (1.200)	39880-1006
09	10.16 (1.400)	39880-1009
12	15.24 (1.600)	39880-1012
15	20.32 (1.800)	39880-1015
18	25.40 (1.000)	39880-1018
21	30.48 (1.200)	39880-1021
24	35.56 (1.400)	39880-1024
27	40.64 (1.600)	39880-1027
30	45.72 (1.800)	39880-1030
33	50.80 (2.000)	39880-1033
36	55.88 (2.200)	39880-1036
39	60.96 (2.400)	39880-1039
42	66.04 (2.600)	39880-1042
45	71.12 (2.800)	39880-1045
48	76.20 (3.000)	39880-1048
51	81.28 (3.200)	39880-1051
54	86.36 (3.400)	39880-1054
57	91.44 (3.600)	39880-1057
60	96.52 (3.800)	39880-1060
63	101.60 (4.000)	39880-1063
66	106.68 (4.200)	39880-1066
69	111.76 (4.400)	39880-1069
72	116.84 (4.600)	39880-1072

- NOTES:**
1. MATERIAL: SEE TABLE
 2. FINISHES: SEE TABLE
 3. PRODUCT SPECIFICATION: NOT REQUIRED
 4. PACKAGING: NOT REQUIRED
 5. MATES WITH: NONE
 6. "XX" REFERS TO THE QUANTITY OF CIRCUITS.

ITEM	QTY.	DESCRIPTION	MATERIAL	FINISH
4	XX	SCREW, M3	BRONZE	NICKEL PLATE
3	XX	RISEING CAGE CLAMP	BRASS	NICKEL PLATE
2	XX	TERMINAL	COPPER ALLOY	TIN PLATE
1	1	INSULATOR, THREE LEVEL	POLYAMIDE	BLACK

EC NO. RELEASED CLY DRWN: CHFK APPR:	MAJOR CRITICAL SPC	QUALITY SYMBOLS	GENERAL TOLERANCES: (UNLESS SPECIFIED)		SCALE 2:1	DESIGN UNITS <input type="checkbox"/> mm <input checked="" type="checkbox"/> INCH	THIRD ANGLE PROJECTION	PROJECT NO. - - DIMENSIONS:		SHT REV
			4 PLACES ±.0015 3 PLACES ±.038 ±.005 2 PLACES ±.13 ±.01 1 PLACE ±.3	mm INCH ±.0015 ±.005 ±.13 ±.01 ±.3	DRAWN BY & DATE C. YORK 12-02-04	TITLE: 5.08mm (.200") HIGH PROFILE, THREE LEVEL TERM. BLOCK		APPROVED BY & DATE	MATERIAL NO. SEE CHART	DRAWING NO. SD-39880-007
DRAFT WHERE APPLICABLE MUST REMAIN WITHIN DIMENSIONS			ANGULAR: ±2°		CAD FILENAME 8834XX	THIS DRAWING CONTAINS INFORMATION THAT IS PROPRIETARY TO MOLEX INCORPORATED AND SHOULD NOT BE USED WITHOUT WRITTEN PERMISSION.				